

## GRE PRACTICE PAPER

### Verbal Reasoning

#### Text Completion

##### Q1)

It is refreshing to read a book about our planet by an author who does not allow facts to be (i)\_\_\_\_\_ by politics: well aware of the political disputes about the effects of human activities on climate and biodiversity, this author does not permit them to (ii)\_\_\_\_\_ his comprehensive description of what we know about our biosphere. He emphasizes the enormous gaps in our knowledge, the sparseness of our observations, and the (iii)\_\_\_\_\_, calling attention to the many aspects of planetary evolution that must be better understood before we can accurately diagnose the condition of our planet.

BLANK(i)	BLANK(ii)	BLANK(iii)
(A) overshadowed	(D) enhance	(G) plausibility of our hypotheses
(B) invalidated	(E) obscure	(H) certainty of our entitlement
(C) illuminated	(F) underscore	(I) superficiality of our theories

##### Q2)

Vain and prone to violence, Caravaggio could not handle success: the more his (i)\_\_\_\_\_ as an artist increased, the more (ii)\_\_\_\_\_ his life became.

Blank(i)	Blank(ii)
(A) temperance	(D) tumultuous
(B) notoriety	(E) providential
(C) eminence	(F) dispassionate

##### Q3)

In parts of the Arctic, the land grades into the landfast ice so \_\_\_\_\_ that you can walk off the coast and not know you are over the hidden sea.

options:

(A) permanently
-----------------

(B) imperceptibly

(C) irregularly

(D) precariously

(E) slightly

## Sentence Equivalence

### Q1)

Although it does contain some pioneering ideas, one would hardly characterize the work as \_\_\_\_\_.

- A. orthodox
- B. eccentric
- C. original
- D. trifling
- E. conventional
- F. innovative

### Q2)

It was her view that the country's problems had been \_\_\_\_\_ by foreign technocrats, so that to ask for such assistance again would be counterproductive.

- A. ameliorated
- B. ascertained
- C. diagnosed
- D. exacerbated
- E. overlooked
- F. worsened

## Reading Comprehension

**Q1) Questions 1 to 3 are based on this passage.**

Reviving the practice of using elements of popular music in classical composition, an approach that had been in hibernation in the United States during the 1960s, composer Philip Glass (born 1937) embraced the ethos of popular music in his compositions. Glass based two symphonies on music by rock musicians David Bowie and Brian Eno, but the symphonies' sound is distinctively his. Popular elements do not appear out of place in Glass's classical music, which from its early days has shared certain harmonies and rhythms with rock music. Yet this use of popular elements has not made Glass a composer of popular music. His music is not a version of popular music packaged to attract classical listeners; it is high art for listeners steeped in rock rather than the classics.

Select only one answer choice.

1. The passage addresses which of the following issues related to Glass's use of popular elements in his classical compositions?
  - A. How it is regarded by listeners who prefer rock to the classics
  - B. How it has affected the commercial success of Glass's music

- C. Whether it has contributed to a revival of interest among other composers in using popular elements in their compositions
  - D. Whether it has had a detrimental effect on Glass's reputation as a composer of classical music
  - E. Whether it has caused certain of Glass's works to be derivative in quality
2. The passage suggests that Glass's work displays which of the following qualities?
- A. A return to the use of popular music in classical compositions
  - B. An attempt to elevate rock music to an artistic status more closely approximating that of classical music
  - C. A long-standing tendency to incorporate elements from two apparently disparate musical styles
3. Select the sentence that distinguishes two ways of integrating rock and classical music.

**GRE Quantitative Reasoning**  
**Quantitative comparison**

**Q1)**

Quantity A

Quantity B

The least prime number greater than  
24

The greatest prime number less than  
28

- A. Quantity A is greater.
- B. Quantity B is greater.
- C. The two quantities are equal.
- D. The relationship cannot be determined from the information given.

**Q2)**

Lionel is younger than Maria.

Quantity A

Quantity B

Twice Lionel's age

Maria's age

- A. Quantity A is greater.
- B. Quantity B is greater.
- C. The two quantities are equal.
- D. The relationship cannot be determined from the information given.

**Q3)**

Quantity A

Quantity B

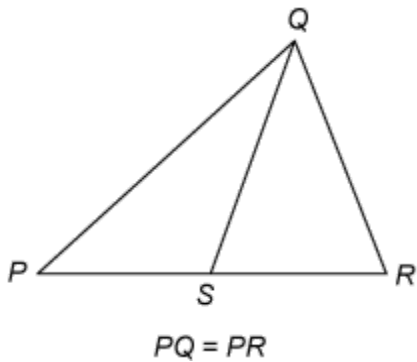
54% of 360

150

- A. Quantity A is greater.
- B. Quantity B is greater.
- C. The two quantities are equal.
- D. The relationship cannot be determined from the information given.

**Q4)**

**Figure 1**



Quantity A

Quantity B

$PS$

$SR$

- A. Quantity A is greater.
- B. Quantity B is greater.
- C. The two quantities are equal.
- D. The relationship cannot be determined from the information given.

**Q5)**

$$y = 2x^2 + 7x - 3$$

Quantity A

Quantity B

$x$

$y$

- A. Quantity A is greater.
- B. Quantity B is greater.
- C. The two quantities are equal.
- D. The relationship cannot be determined from the information given.

**Q6)**

$$y > 4$$

Quantity A

Quantity B

$$\frac{3y + 2}{5}$$

$y$

- A. Quantity A is greater.
- B. Quantity B is greater.
- C. The two quantities are equal.
- D. The relationship cannot be determined from the information given.

Q7)

Quantity A

$$\frac{2^{30} - 2^{29}}{2}$$

Quantity B

$$2^{28}$$

- A. Quantity A is greater.
- B. Quantity B is greater.
- C. The two quantities are equal.
- D. The relationship cannot be determined from the information given.

Q8)

Quantity A

$$x^2 + 1$$

Quantity B

$$2x - 1$$

- A. Quantity A is greater.
- B. Quantity B is greater.
- C. The two quantities are equal.
- D. The relationship cannot be determined from the information given.

**Multiple choice question- select one**

**Q9)**

$$w > 1$$

Quantity A

Quantity B

$$7w - 4$$

$$2w + 5$$

- A. Quantity A is greater.
- B. Quantity B is greater.
- C. The two quantities are equal.
- D. The relationship cannot be determined from the information given.

**Q10)**

If  $5x + 32 = 4 - 2x$ , what is the value of  $x$  ?

- A. -4
- B. -3
- C. 4
- D. 7
- E. 12

**Q11)**

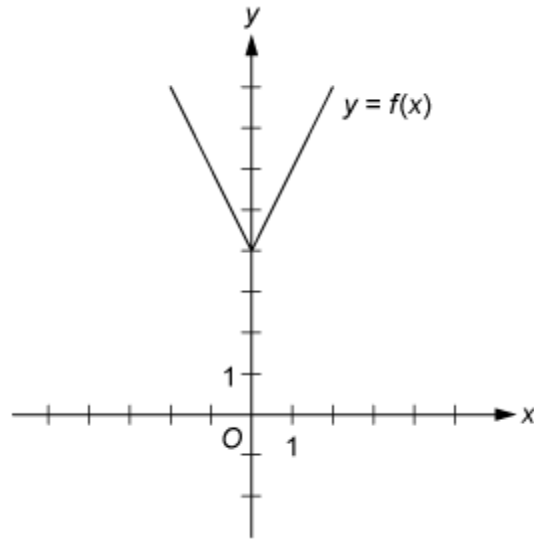
Which of the following numbers is farthest from the number 1 on the number line?

- A. -10

- B. -5
- C. 0
- D. 5
- E. 10

Q12)

Figure 5



The figure above shows the graph of the function  $f$ , defined by  $f(x) = |2x| + 4$  for all numbers  $x$ . For which of the following functions  $g$ , defined for all numbers  $x$ , does the graph of  $g$  intersect the graph of  $f$ ?

- A.  $g(x) = x - 2$
- B.  $g(x) = x + 3$
- C.  $g(x) = 2x - 2$
- D.  $g(x) = 2x + 3$
- E.  $g(x) = 3x - 2$

Multiple choice questions- select one or more

Q13)



Which two of the following numbers have a product that is between  $-1$  and  $0$ ?

Indicate both of the numbers.

- A.  $-20$
- B.  $-10$
- C.  $2^{-4}$
- D.  $3^{-2}$

**Q14)**

Which two of the following numbers have a product that is between  $-1$  and  $0$ ?

Indicate both of the numbers.

- A.  $-20$
- B.  $-10$
- C.  $2^{-4}$
- D.  $3^{-2}$

**Q15)**

Each employee of a certain company is in either Department X or Department Y, and there are more than twice as many employees in Department X as in Department Y. The average (arithmetic mean) salary is \$25,000 for the employees in Department X and \$35,000 for the employees in Department Y. Which of the following amounts could be the average salary for all of the employees of the company?

Indicate all such amounts.

- A. \$26,000
- B. \$28,000
- C. \$29,000
- D. \$30,000
- E. \$31,000
- F. \$32,000
- G. \$34,000

